



MONTHLY MEMBERSHIP PROGRESS REPORT

Results as of: 2/28/2015

Multiple District 404

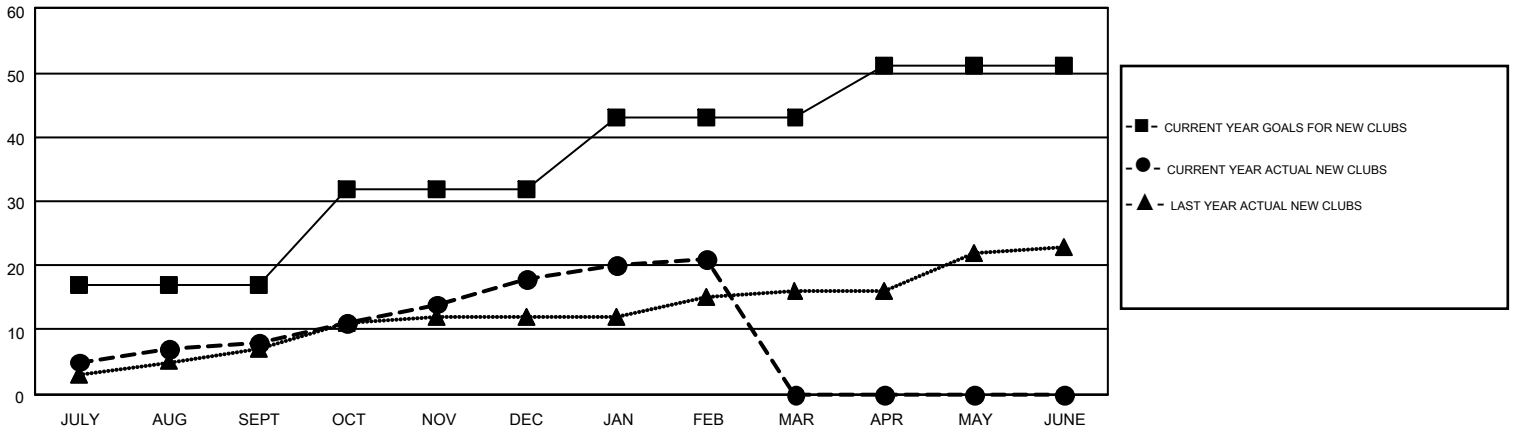
LOCATION: NIGERIA

GMT: AMARPREET SEMBI

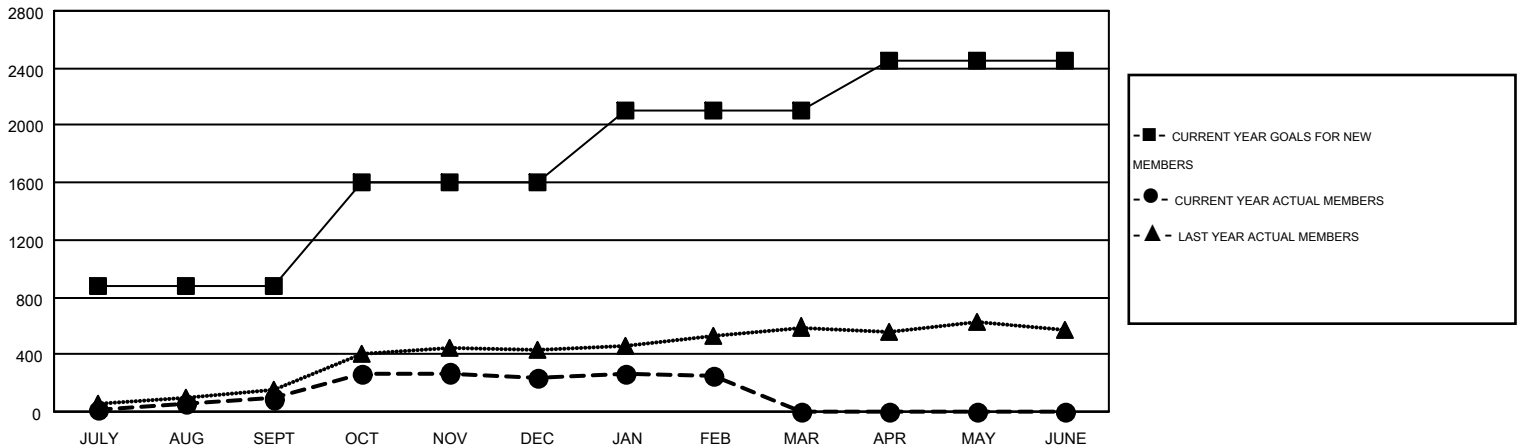
GMT CA 6-Af

| Clubs | | | | | Members | | | | |
|-----------------------|---------------|-----------|---------------|---------------|-----------------------|-----------------|-------------------------------|-----------------|---------------|
| RESULTS FOR 2014-2015 | | | | | RESULTS FOR 2014-2015 | | | | |
| QUARTER | NEW CLUB GOAL | NEW CLUBS | DROPPED CLUBS | NET GAIN/LOSS | QUARTER | NEW MEMBER GOAL | CHARTER AND NEW MEMBERS ADDED | DROPPED MEMBERS | NET GAIN/LOSS |
| JULY/AUG/SEPT | 17 | 8 | 1 | 7 | JULY/AUG/SEPT | 875 | 393 | 302 | 91 |
| OCT/NOV/DEC | 15 | 10 | 5 | 5 | OCT/NOV/DEC | 726 | 565 | 421 | 144 |
| JAN/FEB/MAR | 11 | 3 | 5 | -2 | JAN/FEB/MAR | 506 | 231 | 212 | 19 |
| APR/MAY/JUNE | 8 | 0 | 0 | 0 | APR/MAY/JUNE | 339 | 0 | 0 | 0 |

GOALS AND ACTUAL NEW CLUBS CUMULATIVE



GOALS AND ACTUAL MEMBERS CUMULATIVE



| | | | | | |
|------------------------|--|---|----------------|---------------------|-----|
| DROPPED CLUBS: 11 | 161 CLUBS OF 272 ADDED 1 OR MORE NEW MEMBERS | <u>GENDER DISTRIBUTION</u> | | | |
| <u>DROPPED MEMBERS</u> | | MALE | 4,223 (63.60%) | | |
| DECEASED | 15 | FEMALE | 2,417 (36.40%) | | |
| CLUB CANCELLED | 250 | CLICK HERE FOR HEALTH ASSESSMENT DATA | | | |
| OTHER | 670 | | | FAMILY UNIT MEMBERS | 225 |
| TOTAL | 935 | | | HEAD OF HOUSEHOLD | 106 |
| | | NON-HEAD OF HOUSEHOLD | 119 | | |